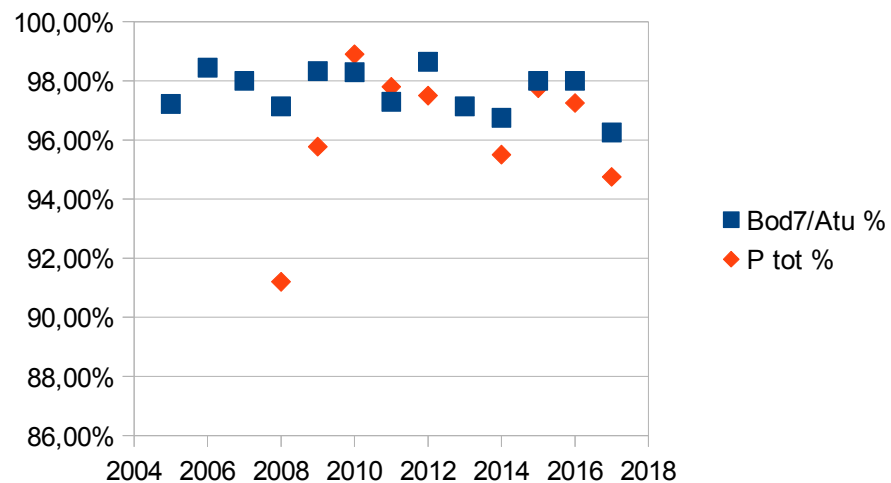


Year	Bod7/Atu %	COD %	SS %	P tot %	N tot %
2005	97,22%	90,59 €			
2006	98,45%	96,16 €	97,83%		
2007	98,00%	97,00 €	97,48%		
2008	97,14%	92,00 €	85,00%	91,20%	55,56%
2009	98,33%	95,25 €	96,08%	95,77%	61,11%
2010	98,29%	96,22 €	98,33%	98,90%	58,54%
2011	97,29%	94,47 €	97,00%	97,80%	54,76%
2012	98,64%	96,92 €	97,62%	97,50%	64,81%
2013	97,14%	95,32 €	94,17%		
2014	96,75%			95,50%	
2015	98,00%			97,75%	
2016	98,00%			97,25%	
2017	96,25%			94,75%	
	97,65%			96,27%	58,96%

2005-2017



For more detailed information please contact ilkka.raita@raita.com

2018

	BOD %	BOD mg/l	Ptot %	Ptot mg/l	Ntot %	Ntot mg/l
2014	95,00%	17	92,00%	0,84		74
	97,00%	7,1	97,00%	0,33		59
	96,00%	13	95,00%	0,65		72
	99,00%	2,4	98,00%	0,26		73
	96,75%	9,875	95,50%	0,52		
2015	97,00%	9,3	95,00%	0,81		61
	97,00%	9,7	98,00%	0,27		82
	99,00%	3,3	99,00%	0,13		71
	99,00%	4,9	99,00%	0,21		82
	98,00%	6,8	97,75%	0,355		
2016	99,00%	5,2	98,00%	0,29		72
	99,00%	3,7	97,00%	0,35		57
	99,00%	4,2	99,00%	0,14		72
	95,00%	4,7	95,00%	0,43		47
	98,00%	4,45	97,25%	0,3025		
2017	91,00%	41	86,00%	2,6		78
	99,00%	5,5	98,00%	0,25		61
	97,00%	5,8	97,00%	0,27		69
	98,00%	2,3	98,00%	0,13		54
	96,25%	13,65	94,75%	0,8125		